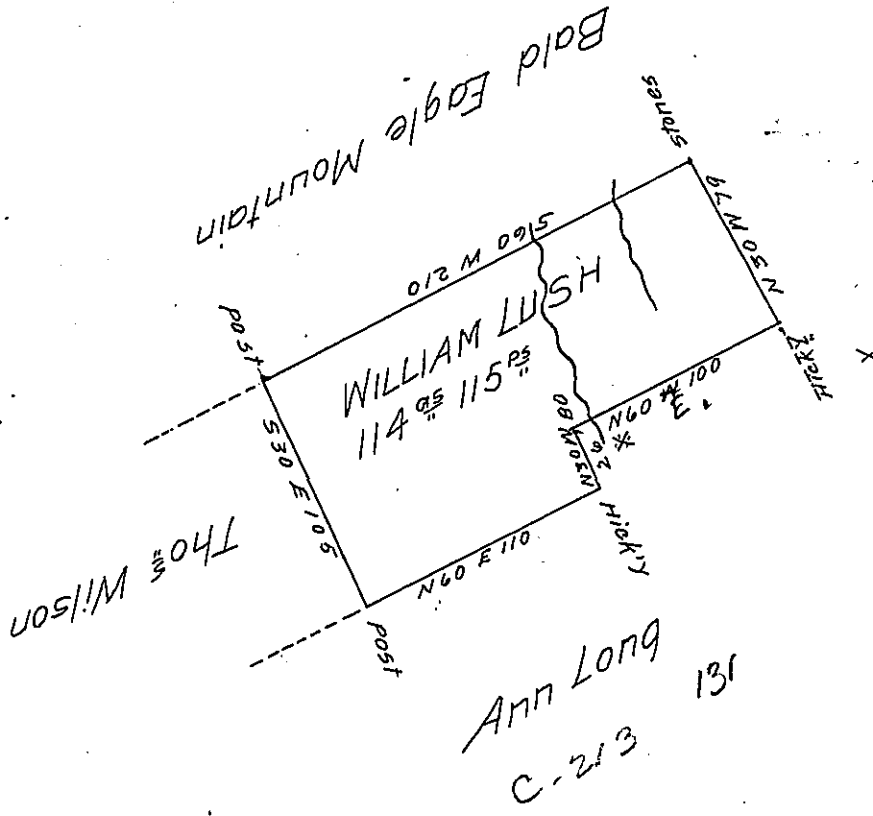


* Say N 60° E 100 P_s



The Draught of a tract of Land situate in Nittany Valley Walker Township, formerly Mifflin, now Centre County Containing one hundred and fourteen Acres, one hundred and fifteen perches and allowance of six percent for Roads. Surveyed the 2nd day of March 1804 in pursuance of a warrant to William Lush dated the 4th day of December 1793 Examined the 3rd October 1810.

To Andrew Porter Esquire
 Surveyor General of Pennsylvania

W^m Kerr D.S.

IN TESTIMONY that the above is a copy of the original remaining on file in the Department of Internal Affairs of Pennsylvania, made conformably to an Act of Assembly approved the 16th day of February, 1833, I have hereunto set my Hand and caused the Seal of said Department to be affixed at Harrisburg, this eighteenth day of September 1905

Isaac D. Brown
 Secretary of Internal Affairs.